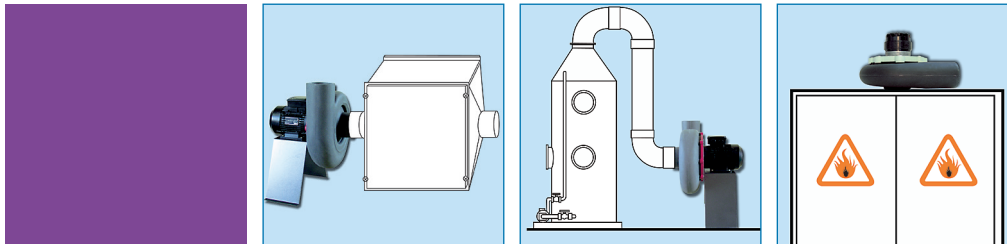


Specifications



Applications

Ventilation of safety cabinets (STORM 10), scrubbers, fume capture arms, filter housing, etc. (STORM 12, 14, 16).

Housings: PP*

Single block strong high density UV treated and recyclable polypropylene (PPH) with no air leakage. All fan mounting hardware in stainless steel. Rotatable to any of 8 standard discharge positions by 45° increments.

* with the exception of STORM 10: PE.



Wheels: PP

Forward curved centrifugal type impeller made of injection molded PPH. Fan wheel supplied with motor shaft bushing and hub cap constructed of PPH. Wheels electronically and dynamically balanced. LG/CCW rotation only.



Motors

Direct drive, asynchronous, single or three phase, IP55. Single speed: three phase 230/400V-50/60 Hz, single phase 230V-50Hz. Explosion proof motors available on request. Motor is outside the corrosive airstream. Three phase motors speed adjustable by variable frequency inverter drive. STORM 10 is also available with external rotor IP 20 motor for quiet performance.



Motor support

Several options: no stand, metal stand or polypropylene motor pedestal.



ATEX

SEAT Series Fans are also available in ATEX Zone II, known outside Europe as explosion proof, category 3 G execution in accordance with ATEX directive 94/9/CE. ATEX declaration of conformity available on our web site www.seat-ventilation.com. The performances curves of explosion proof fans are identical with the ones of the standard version.

Performance

Fan performance based on tests conducted in accordance with AMCA 210-85 and ISO 5801.

Temperature resistance

PPH casing and wheel recommended up to 60°C.

Warranty


SEAT VENTILATION warrants its equipment to be free from defects in workmanship and material under normal use and service for two years after shipment. Warranty is void if damage results from improper wiring or installation.

STORM Series

Electrical data and weight*

	RPM (T/min)	(kW)	(V)	AMP draw (A)	Weight (Kgs)	Reference
Single phase						
STORM 10	1250	0,06	230	0,31	2,10	61102010
	1500	0,06	230	1,12	2,70	61102010
	3000	0,12	230	1,20	4,40	61103010
STORM 12	1500	0,25	230	2,50	7,80	61122010
	3000	0,37	230	3,10	5,60	61123010
STORM 14	3000	1,10	230	5,40	12,80	61143010

Three phase						
STORM 10	1500	0,09	230/400	0,63/0,37	3,50	61102000
	3000	0,12	230/400	0,80/0,46	5,30	61103000
STORM 12	1400	0,18	230/400	1,13/0,65	8,60	61122000
	1400	0,25	230/400	1,70/0,96	7,30	61122000
	3000	0,37	230/400	1,68/0,96	7,40	61123000
STORM 14	3000	1,10	230/400	4,70/2,70	15,70	61143000
STORM 16	3000	2,20	230/400	8,80/5,10	22,60	61163000

ATEX 						
STORM 10 ATEX	1500	0,06	230/400	0,61/0,35	5,00	61102003
	3000	0,12	230/400	0,69/0,4	5,30	61103003
STORM 12 ATEX	3000	0,37	230/400	1,64/0,95	12,30	61123003
STORM 14 ATEX	3000	1,10	230/400	4,33/2,5	15,40	61143003
STORM 16 ATEX	3000	2,20	230/400	8,00/4,60	29,70	61163003

*Tabulated current values are approximate and depend on make and model of the motor.

