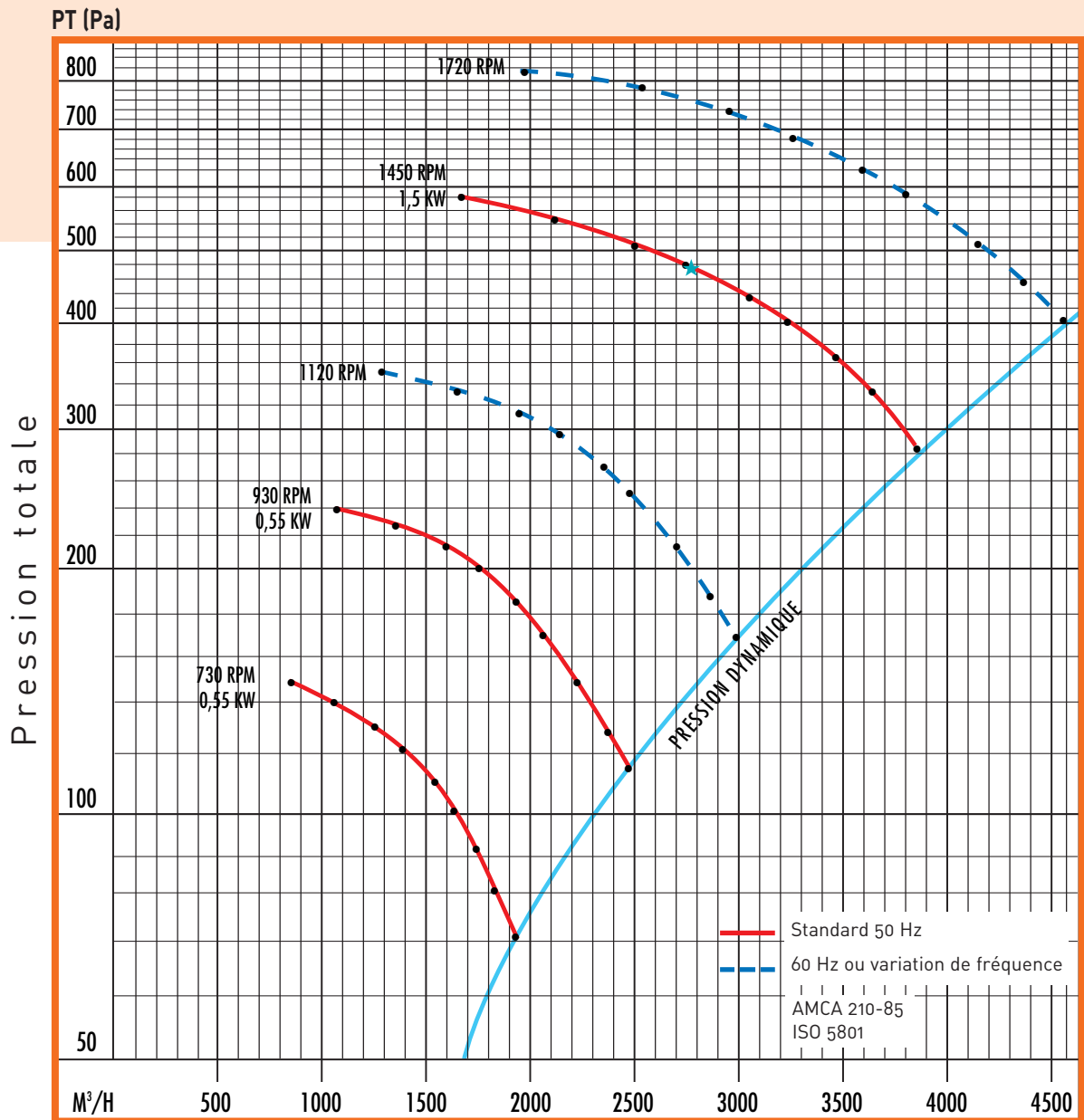
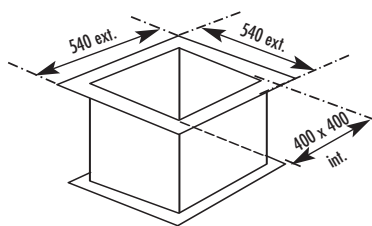
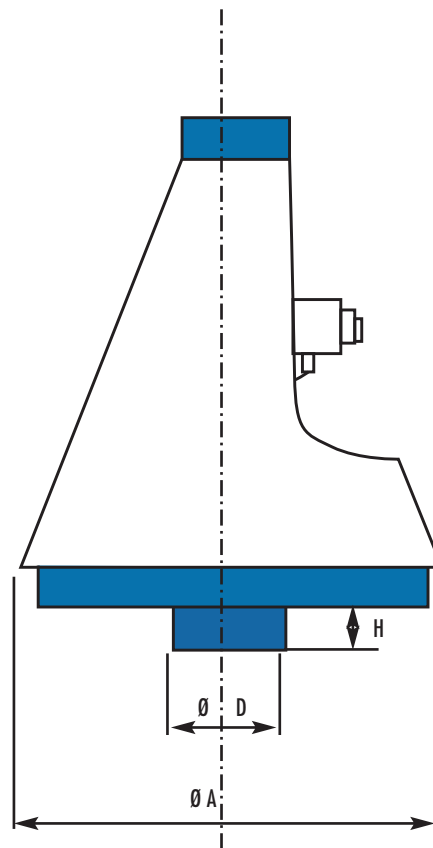
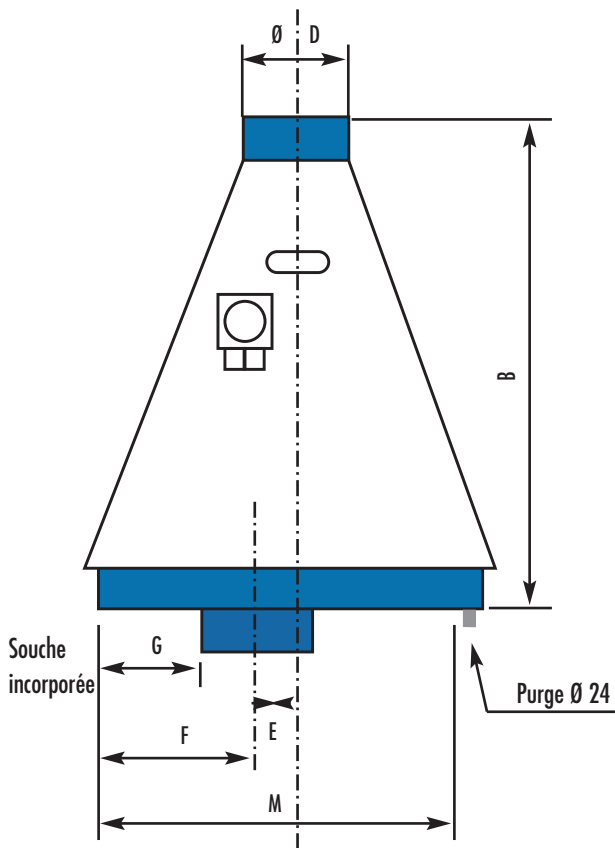


JET 30

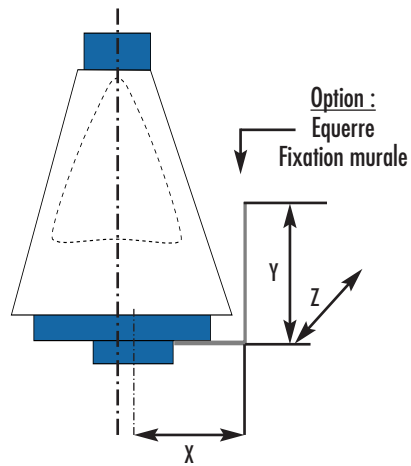


Caractéristiques acoustiques

Type	RPM	100 Hz	250 Hz	500 Hz	1000 Hz	2500 Hz	5000 Hz	10000 Hz	LW Global dB	LW Global dB(A)
JET 30	950/6 poles	69	71	70	65	61	56		76,5	70,7
	1450/4 poles	79	78	77	76	72	66	62	84,1	80,2



Relevé d'étanchéité non fourni



Dimensions (mm)											
A	B	$\emptyset D$	E	F	G	H	G'	X	Y	Z	M
880	1040	250	70	200	75	70	130	400	400	540	540-540 in.